



Features

- Windows PC software for
 - ⇒ operating digital ZED sensors via PC
 - ⇒ displaying and logging measurement values
 - ⇒ displaying sensor properties
 - sensor type, firmware type, calibration date
 - ⇒ activating/deactivating ModBus protocol
 - ⇒ setting ModBus address
 - ⇒ adjusting analog sensor outputs (4...20mA, 0...10V) on ZED D-SiC analog sensors
 - ⇒ ZED USB to RS485 serial adapter with appropriate sensor interface cable available

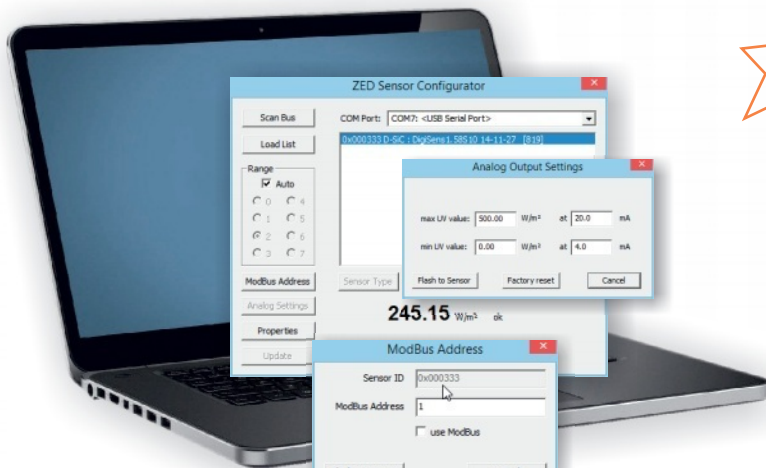


Abstract

- UV monitoring**
- Sensor adjustment**
- ModBus setting**
- Data logging**

use with

- ZED UV Sensors**
D-SiC types
- ZED 185nm Sensor**
D-VUV185



Sensor Configurator Software

USB to RS485 Adapter



(example pictures)

... individual adjustment of ZED D-SiC analog UV sensors

... individual setup of digital ZED sensors for ModBus operation

Follow me 

for detailed technical specification see datasheets at:

www.z-e-d.com/sensorconfigurator